

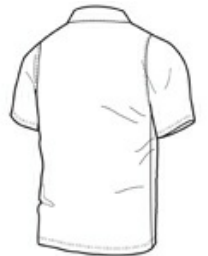
Nike Golf Dri-FIT Fade Stripe Polo 677786



Subtle horizontal stripes combine with Dri-FIT moisture management technology in this polo that keeps you dry on and off the course. Design details include a self-fabric collar, three-button placket and open hem sleeves. The contrast Swoosh design trademark is embroidered on the left sleeve. Made of 3.4-ounce, 100% polyester Dri-FIT fabric.



front



back

HOW TO MEASURE



CHEST
With arms down at sides, measure around the upper body, under arms and over the fullest part of the chest.

SIZE CHART

	XS	S	M	L	XL	2XL	3XL	4XL
Chest	32-35	35-38	38-41	41-44	44-47	47-50	50-53	53-56

COLOR INFORMATION



Dark Steel Grey/
Anthracite



Photo Blue/
College Navy



Sport Teal/
Anthracite